

Skyline from Discovery World Curriculum



Skylines can represent the tall buildings downtown, or they can represent your neighborhood. What landmarks around your home invoke pride of place for you? Is it a grocery store, a church, your school, something old, something new?

Landmark – *noun* – an object or feature of a landscape or town that is easily seen and recognized from a distance, especially one that enables someone to establish their location.

Skyline – *noun* – an outline of land and buildings defined against the sky.



How are these Milwaukee skylines/lakefront pictures alike? How are they different? What is missing? What was added?



1990



Circa 2019



1910s



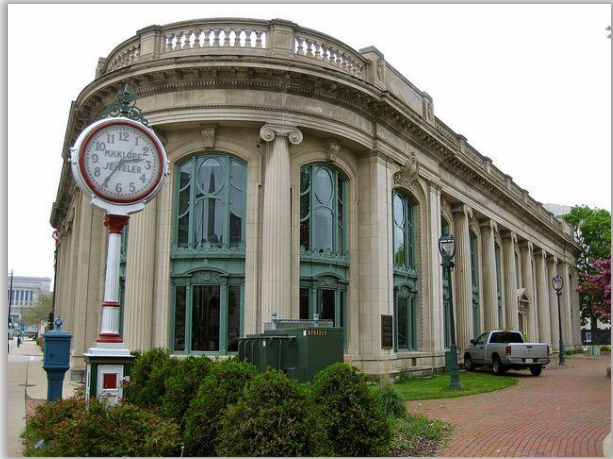
1880s



After
1850

Why are skylines and landmarks important? They represent a pride of place for us and an identifiable image for others to recognize Milwaukee.

Can you recognize any of these Milwaukee Landmarks?



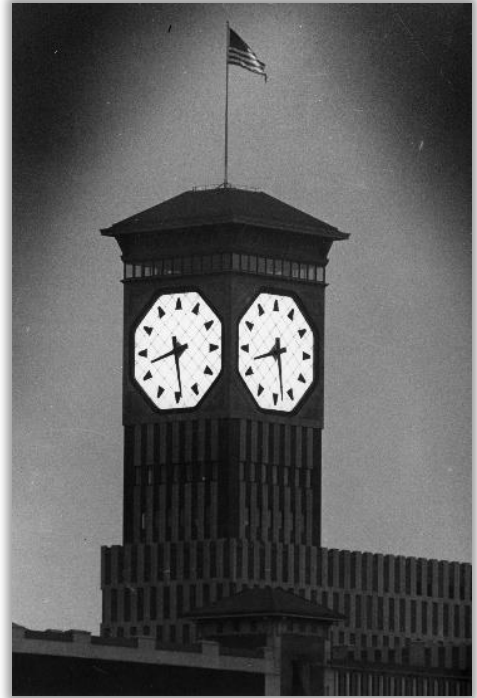
Hint: Pere Marquette Park is in this building's backyard.

Hint: Wisconsin's Major League Baseball team plays here.



Hint: These golden domes are seen on the freeway near the Polish Moon.

Hint: This has a nickname of the “Polish Moon”.



Hint: Sports and shows and conventions...oh my!

Here are some skylines and landmarks from places outside of Wisconsin. Can you recognize any of them? Do you know what city/state/country these are from?

